



CCTV INSPECTION SEWER - DRAIN - WATER

PROFESSIONAL & RELIABLE NO-DIG SERVICES



OUR SERVICE

At Elite Pipeline, we use only the latest state-of-the-art video inspection camera technology to explore even the most inaccessible sections of your pipeline to establish areas that need restoring and rehabilitating.


- Sewer
- Mainline
- Drain
- Lateral
- Water

**We are the profesional partner,
We are always ready for your project**

WHY CHOOSE US?

From pipe crawlers, zoom cameras and push cameras, right through to truck-mounted cameras and manhole inspection cameras, our camera inspection service is the perfect choice for businesses.

CONTACT US

 (616) 726 8286

 5220 Edgewater Drive, Allendale, MI, 49401



CIPP SERVICES

SEWER - DRAIN - WATER

PROFESSIONAL & RELIABLE NO-DIG SERVICES



OUR SERVICE

Our focus when installing our high-quality CIPP is to minimize disruption and cost, and maximize efficiency.

- Sewer
- Mainline
- Drain
- Lateral
- Water

**We are the profesional partner,
We are always ready for your project**

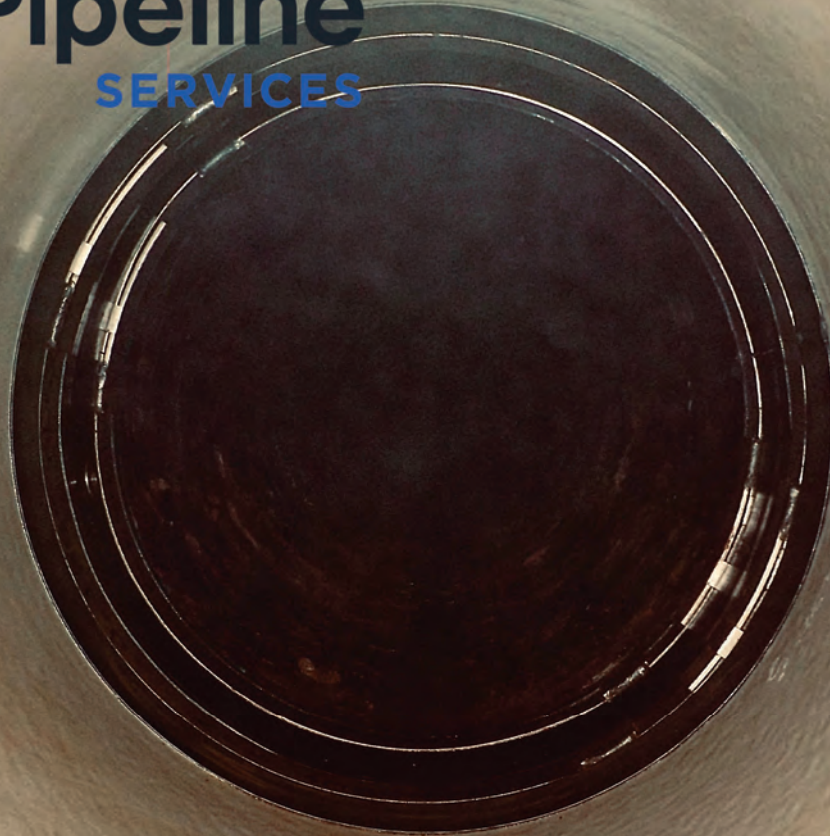
WHY CHOOSE US?

CIPP, or cured-in-place pipe is one of the most popular, robust and trusted methods of trenchless pipe rehabilitation, adding an all-important level of durability to sewer networks, storm drains, gas and buried piping.

CONTACT US

(616) 726 8286

5220 Edgewater Drive, Allendale, MI, 49401



SIPP SPRAY IN PLACE PIPE

PROFESSIONAL & RELIABLE NO-DIG SERVICES

305-degree heat rating
Upto 500 psi pressure rating, dependent on mil thickness applied



Elite and Genesis together
are the profesional partners,
We always ready for your project

OUR SERVICE


Our focus when installing our high-quality SIPP is to minimize disruption and cost, and maximize efficiency.

- Large Diameter
- Nuclear
- Water
- Polyurea
- Strength

WHY CHOOSE US?

SIPP, or spray-in-place pipe is one of the most exciting, strong and trusted methods of trenchless pipe rehabilitation, adding an all-important level of durability to nuclear pipe networks, storm drains, gas and buried piping.

CONTACT US

 (616) 726 8286

 5220 Edgewater Drive, Allendale, MI, 49401



Elite Pipeline
SERVICES



INTERNAL PIPE JOINT SEALS

PROFESSIONAL & RELIABLE NO-DIG SERVICES

-18" TO 210" DIAMETERS

-ABLE TO ACCOMMODATE A VARIETY OF PIPE TYPES, COVERAGES AND CONFIGURATIONS.
-RATED FOR 300 PSI INTERNAL PRESSURE AND UP TO 40 PSI EXTERNAL WITH PROPER DESIGN.

-50 YEAR DESIGN-LIFE



OUR SERVICE

Our focus when installing our high-quality Internal joint seals is to minimize disruption and cost, and maximize efficiency.

- Large Diameter
- Nuclear
- Water
- Leak Free
- Non Corrodible

WHY CHOOSE US?

Elite Pipeline Services is one of the most reputable and trusted pipeline rehabilitation companies in the nuclear industry and is widely considered to be a leader in both pipeline rehabilitation & repair innovation.

**We are the professional partner,
We are always ready for your project.**

[CONTACT US](#)



(616) 726 8286



5220 Edgewater Drive, Allendale, MI, 49401



CHEMICAL GROUTING

SEWER - DRAIN - WATER

PROFESSIONAL & RELIABLE NO-DIG SERVICES



OUR SERVICE

Elite Pipeline Services (EPS) is a provider of Joint Chemical Grouting Services. This joint grouting allows us to reduce or eliminate the infiltration of manholes and sewer lines, which is accomplished by sealing both the defect and the adjacent soil.


- Sewer
- Mainline
- Drain
- Lateral
- Water

**We are the profesional partner,
We are always ready for your project**

WHY CHOOSE US?

EPS uses a variety of chemical grouts to seal pipe joints and sewer connections. It is essential to use a grout that is compatible with the pipe, as well as the soil conditions that surround the defect.

CONTACT US

 (616) 726 8286

 5220 Edgewater Drive, Allendale, MI, 49401



CCTV LATERAL LAUNCH

PROFESSIONAL & RELIABLE NO-DIG SERVICES

Launch camera offers 360-degree pan articulation and +150/-30 degree tilt.

Five megapixel aiming camera offers digital pan/tilt/zoom capability for pinpointing cross bores in any size line.

Rear-facing camera helps you manage cable during reverse crawl.



OUR SERVICE

- Waste Water
- Nuclear
- Oil & Gas
- Potable
- Municipal

Elite are the profesional partners,
We are always ready for your project.

NASSCO PACP-certified

WHY CHOOSE US?

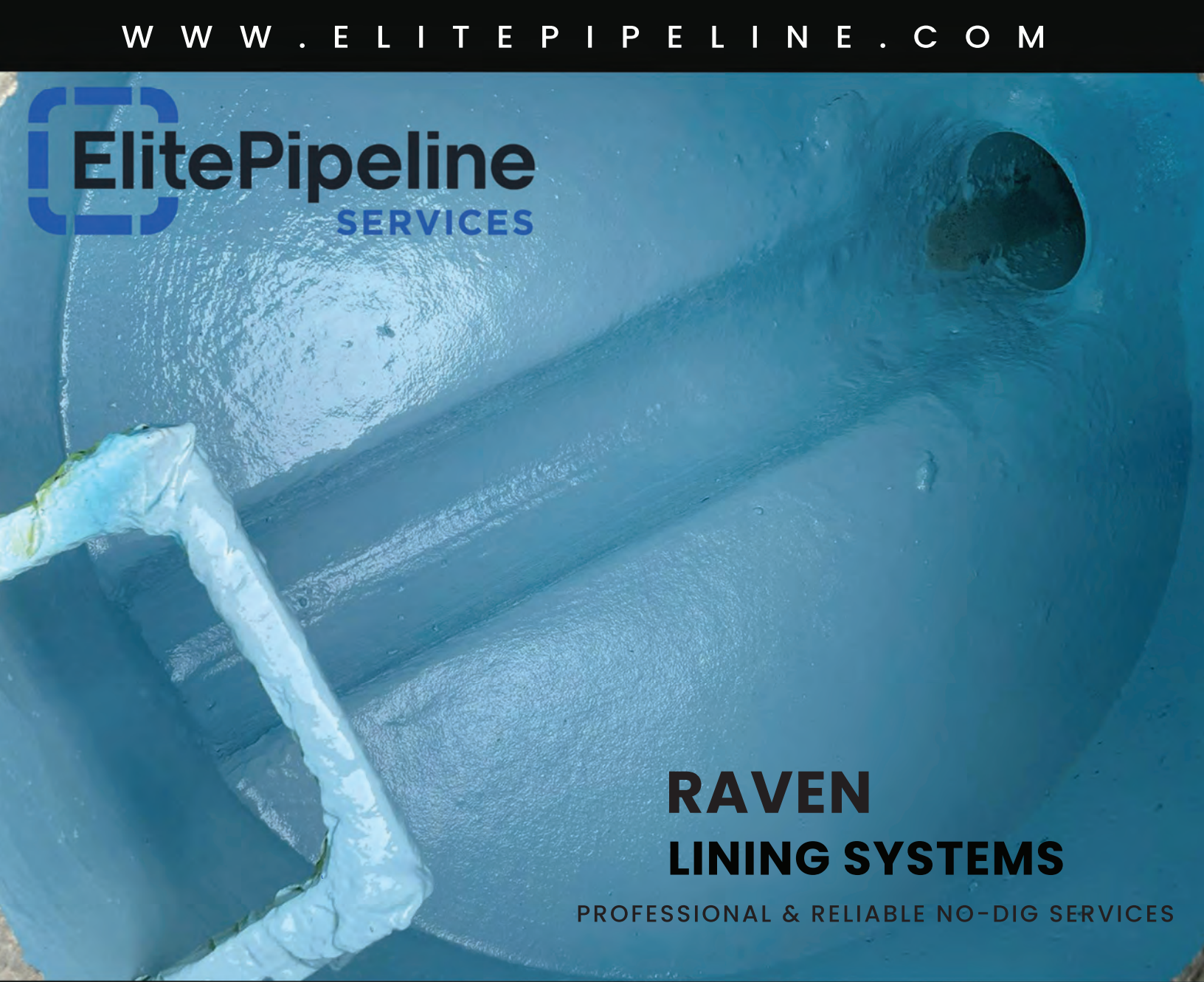
At Elite Pipeline, we use only the latest video inspection camera technology. Our team of expert NASSCO PACP-certified inspectors, who use that data to provide a comprehensive strategy for disruption-free repair work.

Lorem Ipsum

CONTACT US

(616) 726 8286

5220 Edgewater Drive, Allendale, MI, 49401



RAVEN LINING SYSTEMS

PROFESSIONAL & RELIABLE NO-DIG SERVICES



OUR SERVICE

Raven is a manufacturer of high performance polyurethane and polyurea coatings.

- Waste Water
- Nuclear
- Oil & Gas
- Potable
- Strength


WHY CHOOSE US?

Raven epoxies stop corrosion, eliminate infiltration and exfiltration and can be used to structurally rebuild severely damaged wastewater infrastructure

Lorem Ipsum

**Elite are the profesional partners,
We are always ready for your project**

CONTACT US

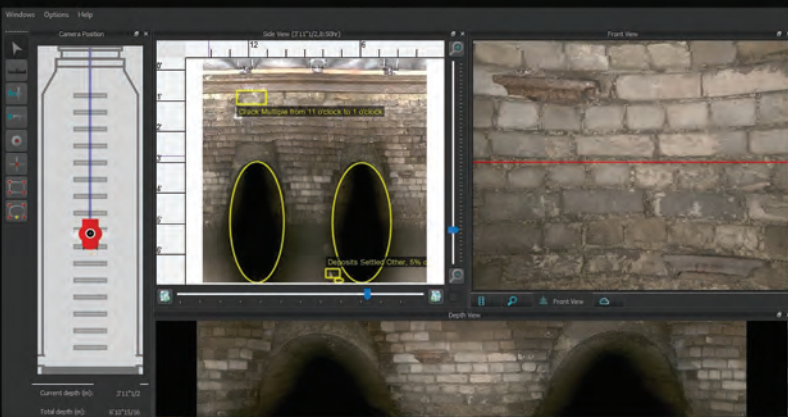
 (616) 726 8286

 5220 Edgewater Drive, Allendale, MI, 49401



MANHOLE INSPECTIONS

PROFESSIONAL & RELIABLE NO-DIG SERVICES



OUR SERVICE

CleverScan inspects a manhole in less than 30 seconds, and supports production rates up to 50 manholes per day.

- 4 Laser Scanners
- 3D Analysis
- 5 HD Cameras
- Portable
- 30ft Depth Scanning

WHY CHOOSE US?

Our staff of knowledgeable, dedicated professionals are here to help. Proudly servicing the nuclear, industrial and municipal markets for over 17 years and counting.

Lorem Ipsum

**We are the profesional partner,
We are always ready for your project**

CONTACT US

(616) 726 8286

5220 Edgewater Drive, Allendale, MI, 49401



PIPE PATCH

SEWER - DRAIN - WATER

PROFESSIONAL & RELIABLE NO-DIG SERVICES

TRENCHLESS PIPE REHABILITATION SYSTEM FOR SMALL AND LARGE PIPE DIAMETERS UP TO 72"

BEFORE

AFTER



OUR SERVICE

Elite Pipeline provides pipeline rehabilitation using Spot Pipe Repairs or Pipe Patches. These below repairs can be installed during live flows.

- Sewer
- Mainline
- Drain
- Lateral
- Water

We are the profesional partner,
We are always ready for your project

WHY CHOOSE US?

These products can be used to rehabilitate sanitary sewers, storm drains and pressure pipelines for water, gas and process effluents. We provide confined-space entry setups. Once the defect is found and measured the spot repair is dragged into position and inflated

[CONTACT US](#)

(616) 726 8286

5220 Edgewater Drive, Allendale, MI, 49401