



+1 616 726 8286

Certified
WBENC
Women's Business Enterprise



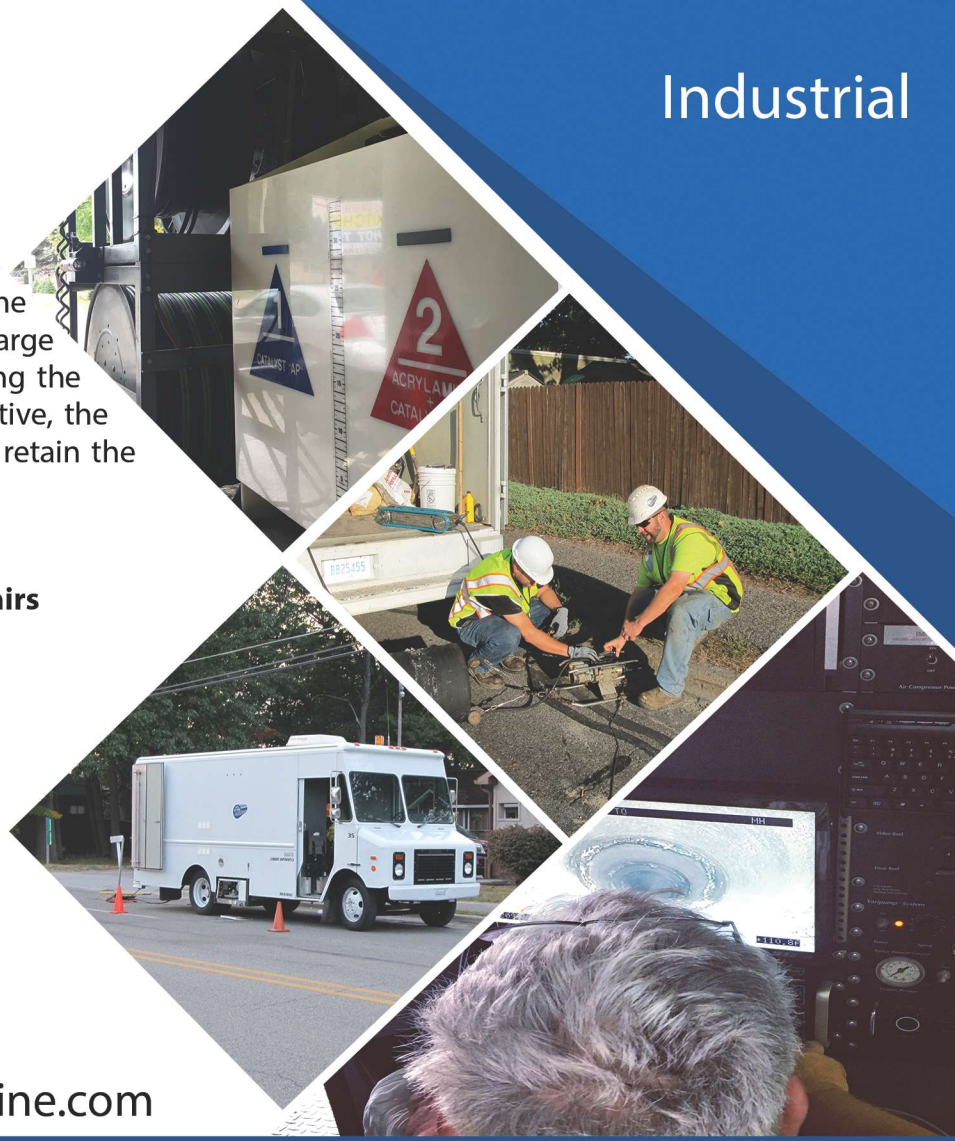
Nuclear
Municipal
Industrial

Chemical

Joint Grouting

Joint grouting reduces or eliminates infiltration in manholes and sewer lines, which is accomplished by sealing both the defect and the adjacent soil. Grout can be applied over a large area at lateral joints, or at specific points along the main line. For chemical grouting to be effective, the surrounding soil should be stable enough to retain the grout.

- Large Diameters
- 2 Part Injection
- Lateral Repairs
- Manhole Repairs
- Cost Effective
- Pull In Place



www.elitepipeline.com