

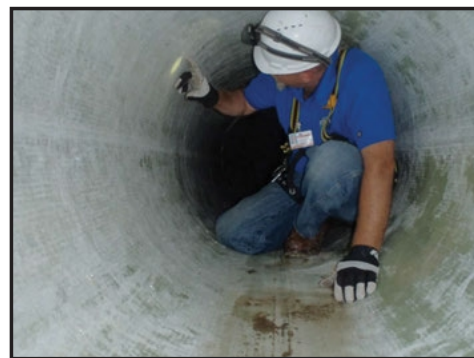


CIPP Ultra Violet Fibreglass Liner

- NO Boiler Equipment.
- NO Refer Truck.
- NO Inversion – Pull-In-Place Installation.
- NO Contaminated water disposal or concern!
- NO Exposed resins – encapsulated concept.
- Controlled Cure – See it before you cure it!
- QUICK, RELIABLE, ENVIRONMENTALLY FRIENDLY.
- High Strength – Excellent Mechanical Properties – Translates into minimal ID reduction.



Before



After

5220 Edgewater Dr. Allendale, MI 49401 Phone: (616) 726-8286 Fax: (616) 726-8287 www.elitepipeline.com

dedicated professionals trusted results

| DN | |
|------|------|
| mm | inch |
| 100 | 4 |
| 200 | 8 |
| 300 | 12 |
| 400 | 16 |
| 500 | 20 |
| 600 | 24 |
| 700 | 28 |
| 800 | 32 |
| 900 | 36 |
| 1000 | 40 |
| 1200 | 48 |

- Environmental friendly product and resins.
- Impregnation done at manufacture before going to site.
- Textile Glass, which is permanently resistant to chemical agents or corrosion.
- Design Life of 70 years.
- Heat Rating 150°.
- For a pressure pipe application, the Premium UV Liner is required and conservatively you can achieve 150 Psi, some bursts tests have been as high as 500 psi.
- Thickness of liner ½ Inch for fully detached pipe.
- Each liner is designed for plant specifics and depth.
- Pull-In liner.
- Dry Install.
- 8 x 1000 watt light train to activate resins.

