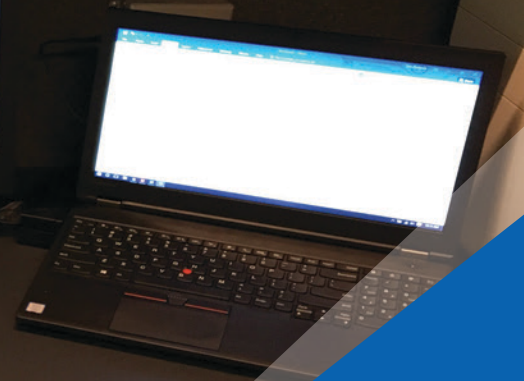
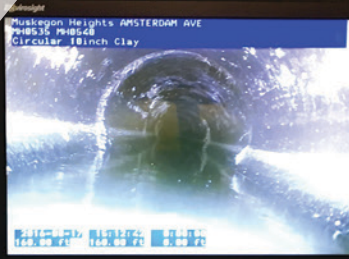




+1 616 726 8286



Nuclear

Municipal

Industrial

CCTV

Pipe Inspections

Depending on your needs and pipe size, Elite Pipeline has a CCTV solution for you. Inspections can be performed with a variety of cameras in nearly all sizes of pipe. Our NASSCO PACP certified inspectors have years of experience and hundreds of thousands of feet inspected

- Any Diameter
- MACP, PACP & LACP
- Inclination Reporting
- Manhole Inspections
- GIS Intergration
- Steerable Transporter



www.elitepipeline.com





+1 616 726 8286



Nuclear

Municipal

Industrial

CIPP

Cured In Place Pipe

EPS provides pipeline rehabilitation using Cured in Place Piping (CIPP), UV Cured & Internal spin casting products. These products can be used to rehabilitate sanitary sewers, storm drains and pressure pipelines for water, gas and process effluents. We provide confined-space entry setups. The products can be used for pipes from 1" to 66". During this process, CIPP liners of non-woven polyester felt reinforced fabric are manufactured specific to conditions to fit the host pipe.

- ➔ Ambient & Quick Cure
- ➔ Sectional Repair
- ➔ Chemical Resistant
- ➔ Inversion
- ➔ Pull In Place
- ➔ Pressure Pipe Repair



www.elitepipeline.com





+1 616 726 8286

Certified
WBENC
Women's Business Enterprise

Nuclear

Municipal

Industrial

Internal

Joint Seals

Internal seals allow for fast installation and immediate results. Seals will help prevent leakages due to pipe damage. Every seal is expanded, re-expanded, and air tested. Internal seals will provide a bottle tight seal and prevent infiltration or ex-filtration on existing pipelines. Seals are able to accommodate a variety of pipe configurations and shapes.

- 18" - 200" Installs
- Maintenance Free
- Non-Corrosible
- Internal Sleeves
- Cost-Effective
- Leak Proof

ElitePipeline
SERVICES

www.elitepipeline.com





+1 616 726 8286



Nuclear

Municipal

Industrial

Cured In Place Pipe

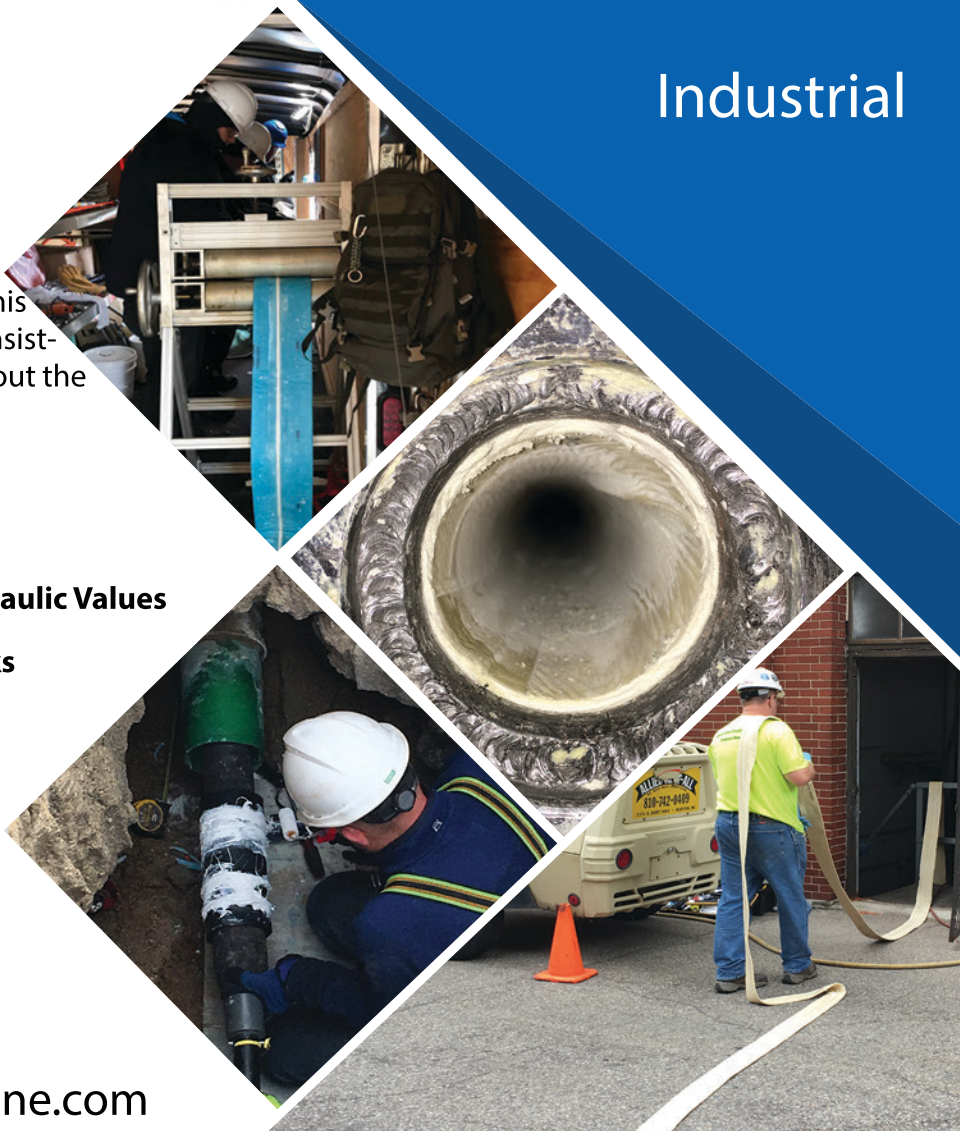
Inversion

Our inversion systems uses air pressure to invert CIPP liners. Our liners invert through elbows without the use of water and steam. This process allows the liner to install easily and consistently without having to stop and start throughout the inversion installation.

- Structural Solutions
- Excellent Hydraulic Values
- Steam Lines
- No Refer Trucks
- No Boilers
- End Sealing

ElitePipeline
SERVICES

www.elitepipeline.com





+1 616 726 8286



Nuclear

Municipal

Industrial

Chemical

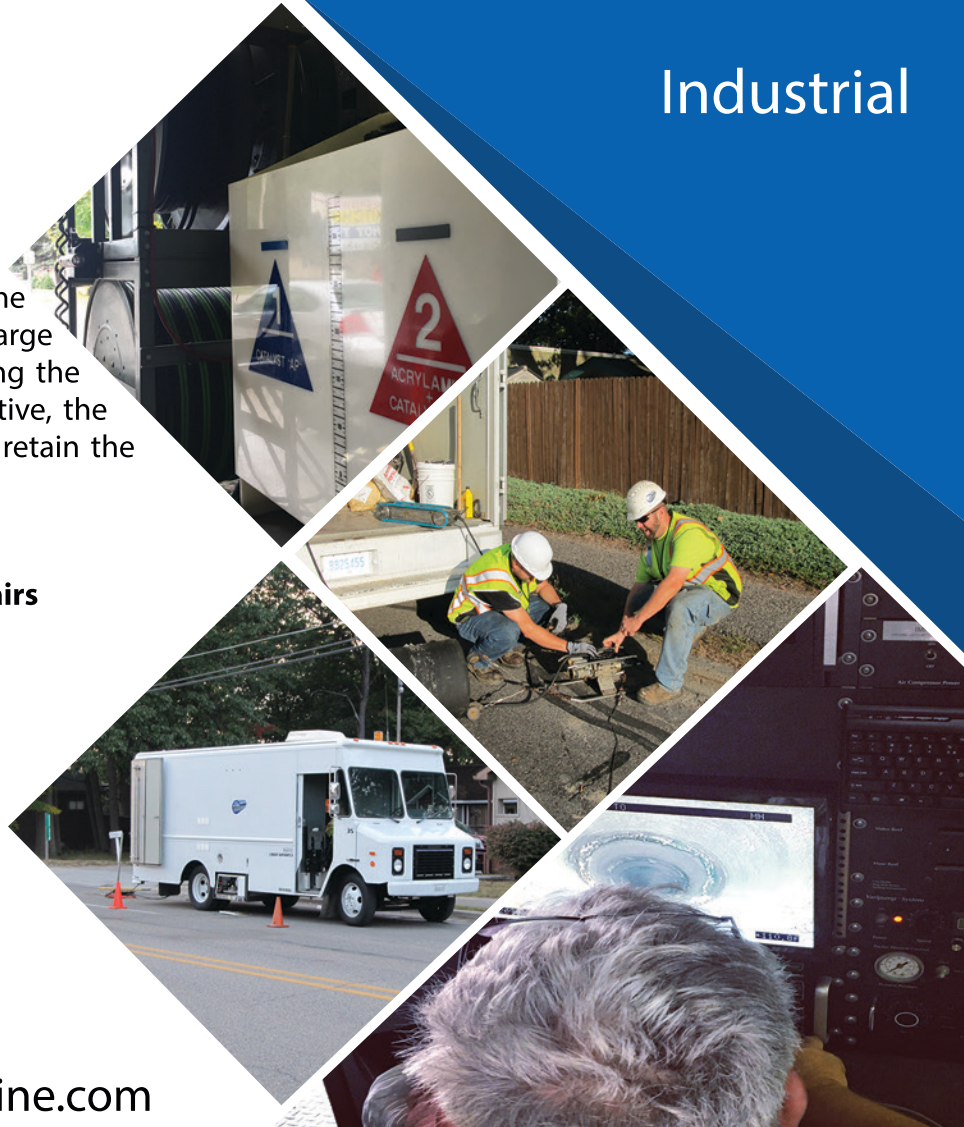
Joint Grouting

Joint grouting reduces or eliminates infiltration in manholes and sewer lines, which is accomplished by sealing both the defect and the adjacent soil. Grout can be applied over a large area at lateral joints, or at specific points along the main line. For chemical grouting to be effective, the surrounding soil should be stable enough to retain the grout.

- ➔ Large Diameters
- ➔ 2 Part Injection
- ➔ Lateral Repairs
- ➔ Manhole Repairs
- ➔ Cost Effective
- ➔ Pull In Place



www.elitepipeline.com





+1 616 726 8286



Certified
WBENC
Women's Business Enterprise



Nuclear
Municipal
Industrial

Fiber Glass

Patch Repairs

Elite Pipeline provides pipeline rehabilitation using Spot Pipe Repairs or Pipe Patches. These repairs can be installed during live flows. These products can be used to rehabilitate sanitary sewers, storm drains and pressure pipelines for water, gas and process effluents.

- ➔ Install Live Flows
- ➔ Structural Repair
- ➔ 20 - 40 Minute Cure
- ➔ Flow Through Packer
- ➔ Confine Space Setup
- ➔ Pull In Place

ElitePipeline
SERVICES

www.elitepipeline.com





+1 616 726 8286



Nuclear
Municipal
Industrial

Cure In Place Pipe

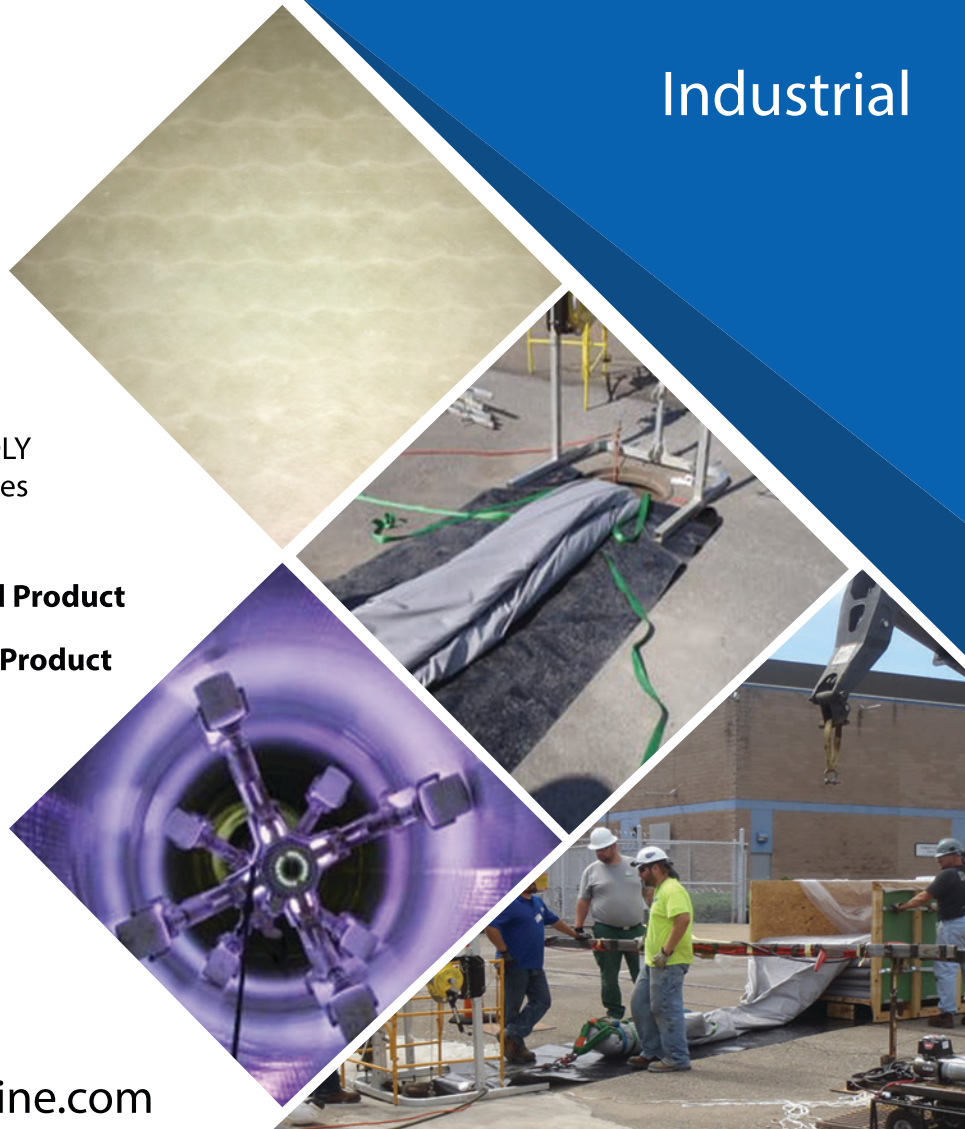
UV CIPP

- NO Boiler Equipment
- NO Refer Truck (Controlled Cures)
- NO Inversion - Pull-In-Place Installation
- NO contaminated water disposal or concern
- NO exposed resins – encapsulated concept.
- See it before you cure it!
- QUICK, RELIABLE, ENVIRONMENTALLY FRIENDLY
- High Strength - Excellent Mechanical Properties
- Minimal ID Reduction

- ➔ Design life 70 years
- ➔ High Psi Rated Product
- ➔ Heat Rating 150*
- ➔ Pressure Pipe Product
- ➔ Corrosion Resistant
- ➔ Pull In Liner



www.elitepipeline.com





+1 616 726 8286



Nuclear

Municipal

Industrial

Elite

Vac Cons & Jetting

Vacuum services include the use of skid or truck-mounted vacuums. These units can be used for vacuuming ash, dirt, dust, sand, stone, water and slurry materials with HEPA filters as well as liquids.

Elite Pipeline Services offers a wide range of jetting equipment for cleaning pipes, ranging in size from 1.5" to over 120". EPS operates electric jetters from 5 to 14 gpm at 4,000 psi and trailer mounted systems which operate 40 gpm at 3,000 psi.

- Any Diameter
- Trailer Jetters
- Electric Jetters
- Rotary Nozzels
- Hydrolazing
- Descaling



www.elitepipeline.com





Nuclear
Municipal
Industrial

Elite Pipeline Services

CCTV Inspections

- Pan, Tilt & Zoom Cameras
- 1" & larger
- PACP, MACP & LACP Certified
- Inclination Reporting

Cameras

- Quick View Zoom Camera
- Push Camera
- Bore Scope Camera
- Manhole Inspection Camera

Jet Vac Services

- High Pressure Water Jet Cleaning
- Mechanical Concrete Removal
- Vacuum Debris Removal

CIPP

- UV CIPP
- 1" - 66"
- Sectional, Inversion & Steam Cure

Internal Seals

- Joint Sealing
- Sleeves
- Joint Repair

Manned Inspection & Repair

- Manned Video & Photo Inspections
- Pipe Repairs
- Coating Repair & Removal
- Manned Inspections 18" & Larger

Joint Grouting

- Stops Infiltration of Manholes & Sewer Pipes
- Large Selection of Pipe Diameters

Other

- Sponge Blasting
- Internal Spin Cast Coating
- NDE Services

www.elitepipeline.com



+1 616 726 8286

SAFETY FIRST

ElitePipeline
SERVICES

Certified
WBENC

Women's Business Enterprise

Nuclear

Municipal

Industrial

Manhole

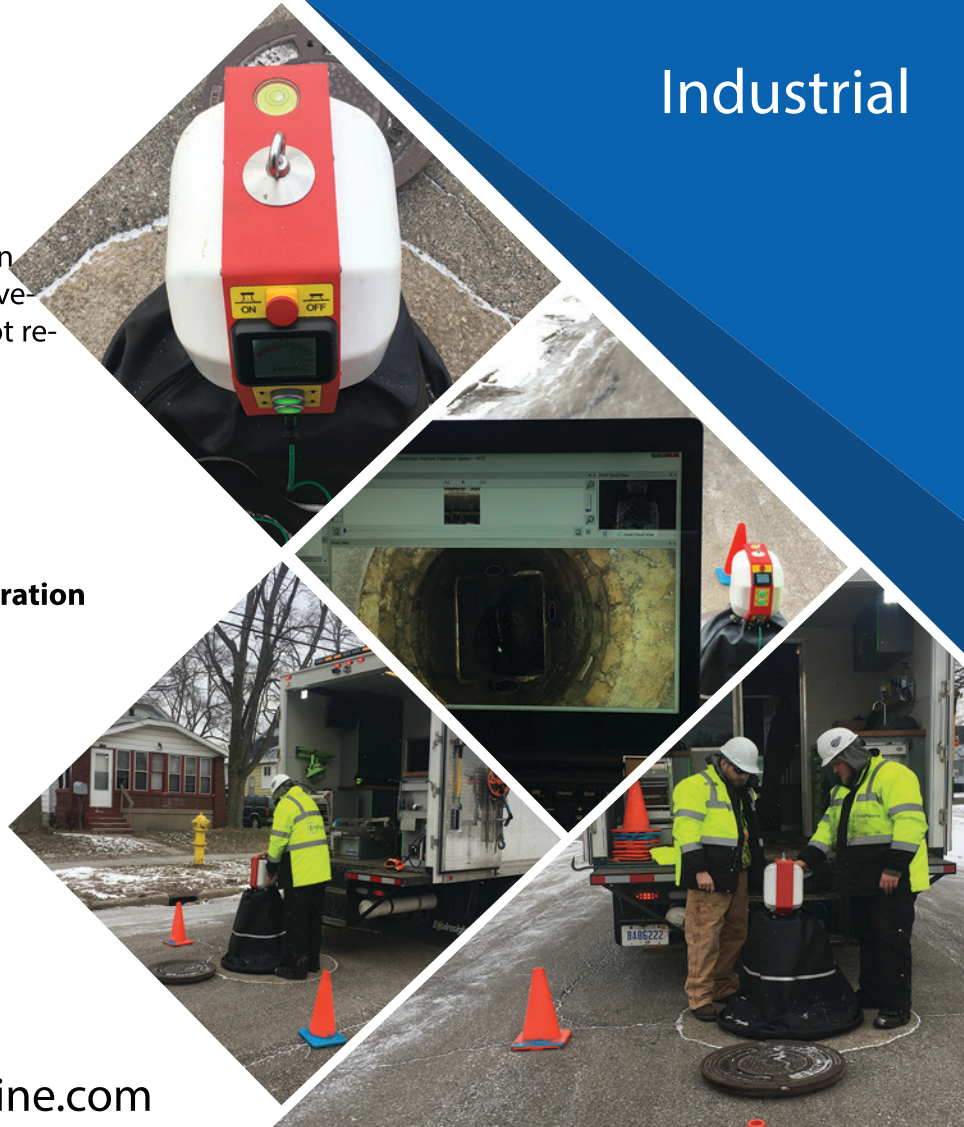
Inspections

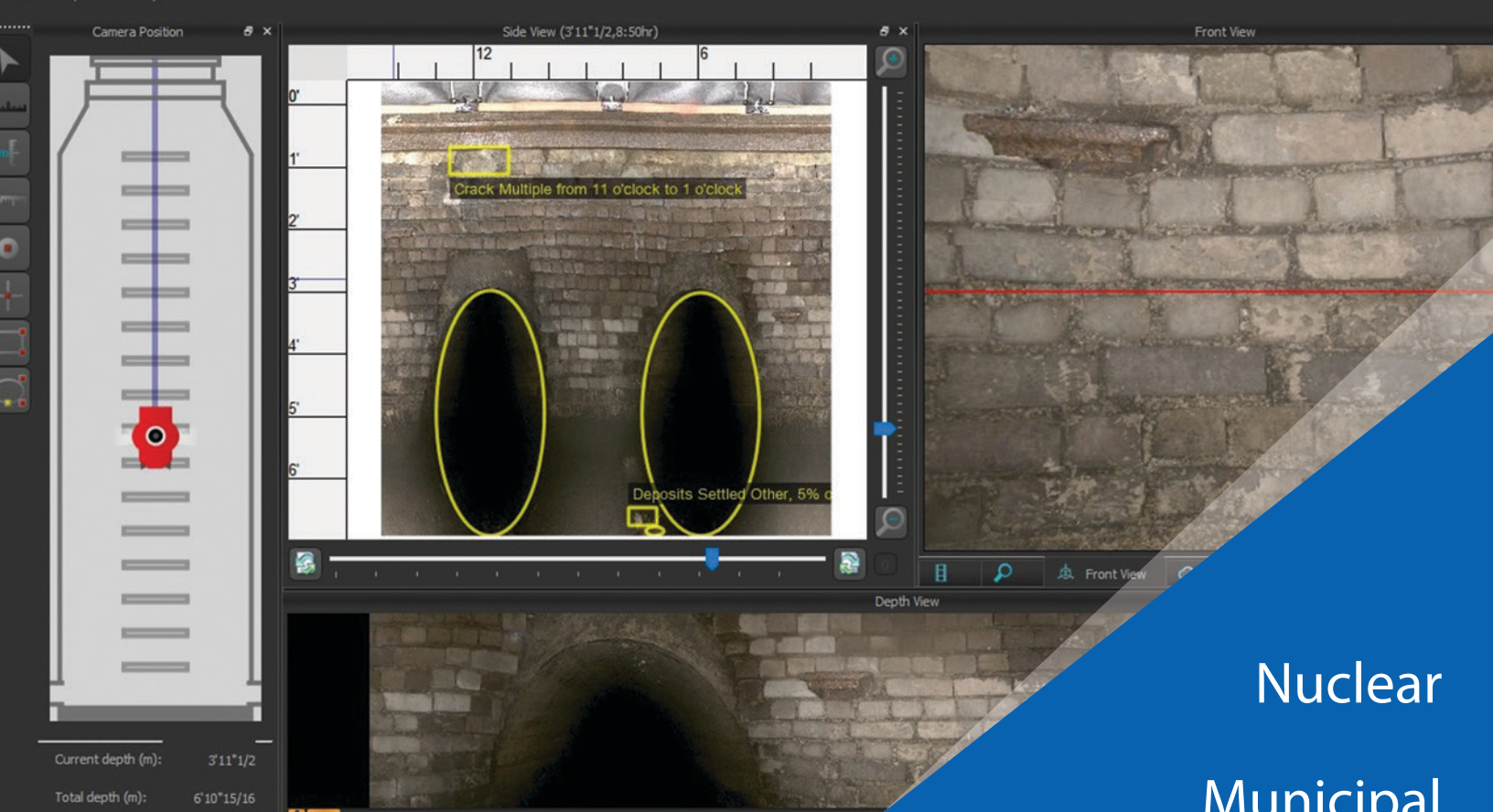
Our Manhole Inspection systems are fully automated, and an inspection only take 2-3 minutes to scan. Our level 2 MACP operators can produce high detailed reports from their field vehicles to give clients & asset owners on the spot results.

- ➔ HD Quality
- ➔ Full GIS Intergration
- ➔ 3D View of Manhole
- ➔ Portable
- ➔ Deploy in Minutes
- ➔ Laser Profile

ElitePipeline
SERVICES

www.elitepipeline.com





Nuclear
Municipal
Industrial

Elite Pipeline Services

CCTV Inspections

- Pan, Tilt & Zoom Cameras
- 1" & larger
- PACP, MACP & LACP Certified
- Inclination Reporting

Cameras

- Quick View Zoom Camera
- Push Camera
- Bore Scope Camera
- Manhole Inspection Camera

Jet Vac Services

- High Pressure Water Jet Cleaning
- Mechanical Concrete Removal
- Vacuum Debris Removal

CIPP

- UV CIPP
- 1" - 66"
- Sectional, Inversion & Steam Cure

Internal Seals

- Joint Sealing
- Sleeves
- Joint Repair

Manned Inspection & Repair

- Manned Video & Photo Inspections
- Pipe Repairs
- Coating Repair & Removal
- Manned Inspections 18" & Larger

Joint Grouting

- Stops Infiltration of Manholes & Sewer Pipes
- Large Selection of Pipe Diameters

Other

- Sponge Blasting
- Internal Spin Cast Coating
- NDE Services