

Elite Pipeline Services
www.elitepipeline.com

Rehabilitation of 1200ft, 4” Contaminated Pipeline by Internal Spin Casting

Introduction

Special points of interest:

- Dry Cleaning
- Surface Prep
- Spin Casting



- Approximately 1200 ft. of 4” line containing 4 main headers, 14 branch lines with 94 drain lines to be 100% cleaned and coated.
- Corrugated Metal Pipe CMP
- Drain Isolation Require, and suitable for site.
- Suitable Airborne Contamination Conditions.
- Preliminary video inspection determines extent of degradation debris build up.
- Drains were clogged and obstructed requiring aggressive mechanical cleaning.
- FME retrieval device was used to remove large metal debris.
- Estimated project length approx. 12 months. Working through and around outages.
- Personnel required to wear PAPH Hoods or respirators for duration of project.
- Estimated Dose of 7250 millirem.
- Spincast coating can withstand 180° F with no sagging or softening.
- Cure Time of coatings – 6hr (Outside Temp 75°).
- White metal surface or near white metal is preferred, but not mandatory. Everything in between ie. loose debris, hard scale debris, restricting flow and sharp edges should be cleaned.
- Personnel Required:
 - 5 Elite Personnel, 2 HP, RP techs
 - 1 Decon. & 1 Elite Project Manager, 1 Site manager.

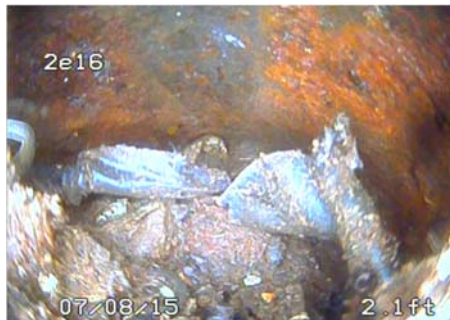


Inside this issue:

- | | |
|-----------------|----------|
| Inversion Liner | 1 |
| Spin Casting | 2 |
| Pull In Liner | 3 |
| Robotic Cutter | 3 |

Dry Cleaning & Rehabilitating 1200ft of 4" Contaminated Lines by Spin Cast Internal Coating

We are currently about 90% completed on cleaning 1200ft of 4" fuel building contaminated piping . Below are some as found pictures and spin cast nozzle.



20 Weeks in PAPH Hoods & Respirators



"We are raising the bar for decontamination proficiency in extreme conditions. Under our Tyvek suits we have ice vests, radio communications and due to heat our employees in the fuel building basement were only restricted to 45 min jumps in respirators. Considering we are always in high risk situations we have always maintained control and safety with the assistance of first class plant support.

Carl Beitner

Prepping for Internal Spray Cast Coating



Vacuuming Contaminated debris after mechanical dry carbide cleaning. No water required.

Cleaning & Rehabilitating 206ft of 6" to 4" Contaminated Lines with Reinstatements

A nuclear facility required that their buried Max Recycle radioactive Equipment and Floor drain pipe be relined, totaling 206 ft. The main trunk line of these pipes is 6 inch in diameter. There were two separate lines, with 19 reinstatements in total. A Hydrolasing unit was required for cleaning with a capped pressure of 1800 psi. The waste water and sludge was directed to a catchment/rad waste barrel configuration hold and separate wet waste and contaminants liquid waste was pumped into the existing rad waste floor drain system. Both lines had elevations throughout the piping system. Access to the buried pipe was possible by a newly installed concrete vault and through a cordoned off room in the Max recycle building. Access point's within the Max Recycle building was 2" and 4" in diameter, which allowed the access needed for technical installation of the 6" liners. Liners had to be pulled, winched, and set into place prior to installation utilizing the access points. The liner design was a slow cure, with 100% coverage, and was required to withstand 180 degrees during operation. With limited access points to reinstate the lateral drain lines, with sizes ranging from 2" – 4", a robotic air driven cutter had to maneuver up elevations, and reinstate these lateral drains from more than 100ft from access. During this entire evolution HP/RP support, Task managers, security and project management was required to oversee and maintain a safe working area for Elite to work in, which made for a successful project.



Pulling in a 6" to 4" Transitional Liner, Through a 2" Access Point.



Reinstating Laterals from 100ft Away in a 4" Pipe Transition using a Robotic Cutter

Contactable in this document:

sdishon@elitepipeline.com

Phone: 616-726-8286